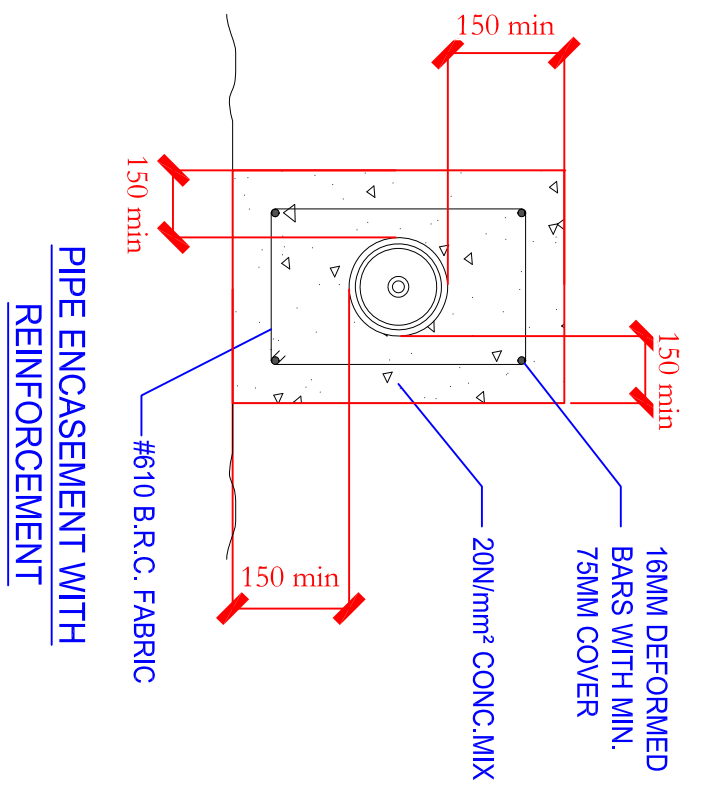
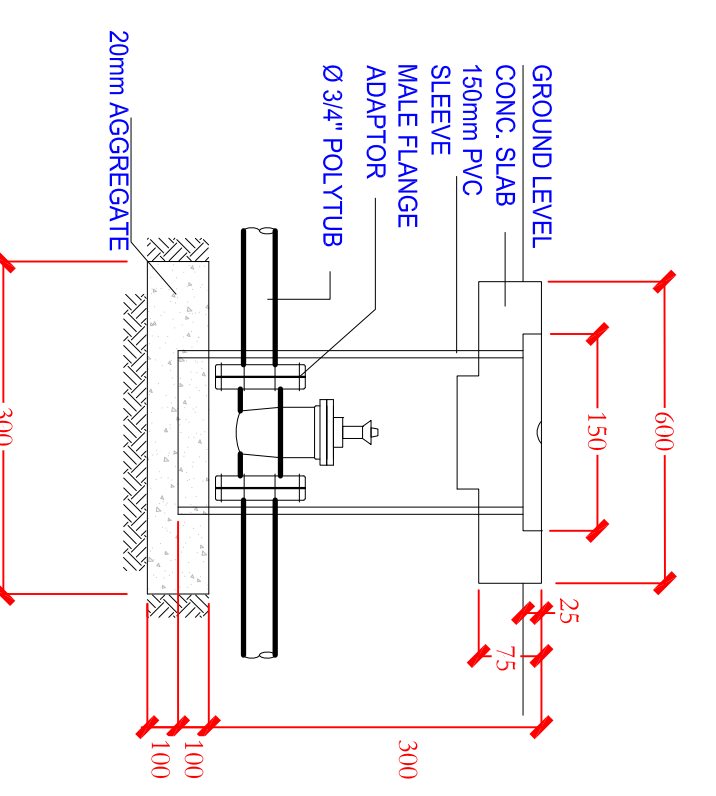


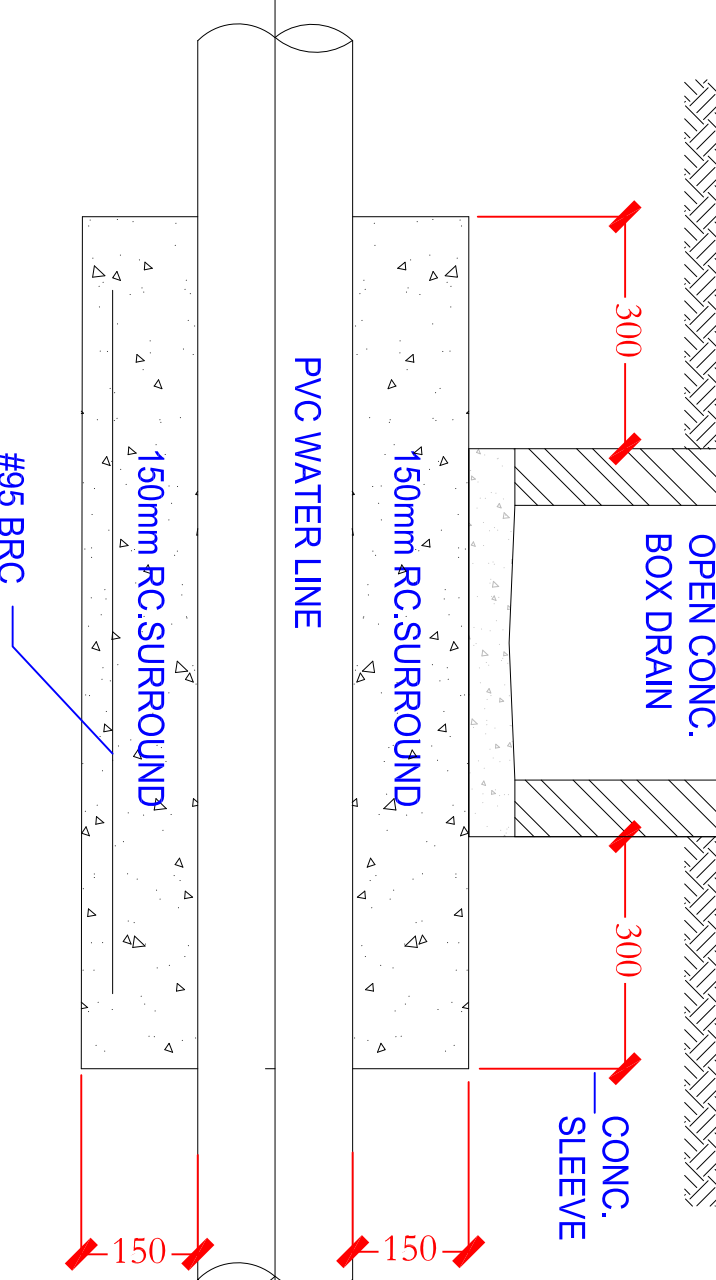
P01 CONCRETE ENCASUREMENT DETAIL



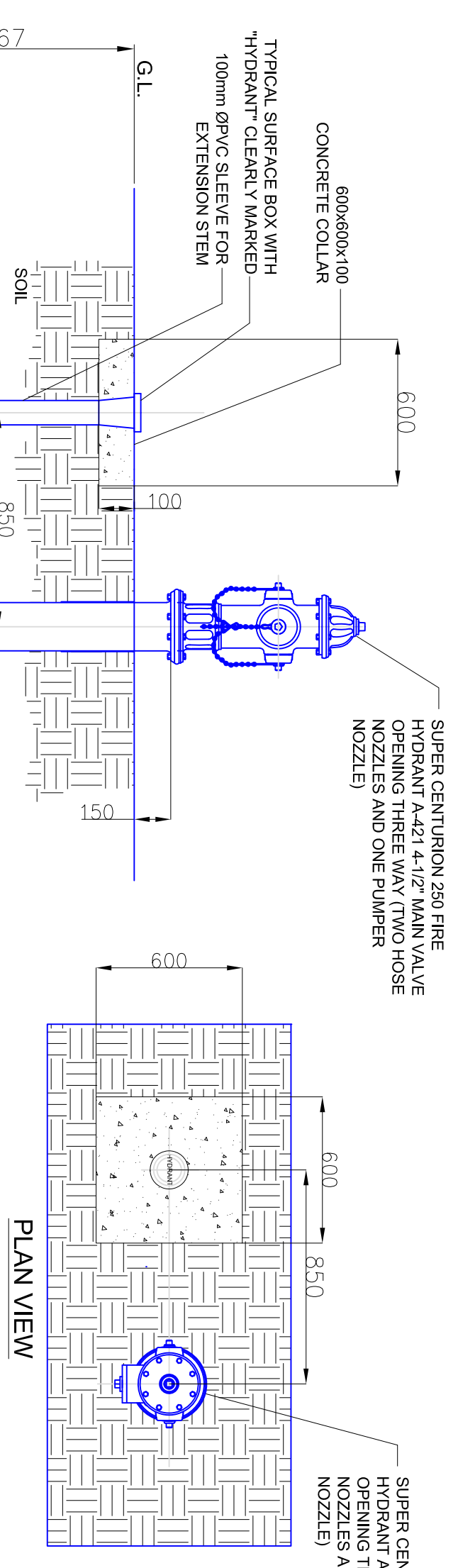
P02 TYPICAL STOP COCK DETAIL



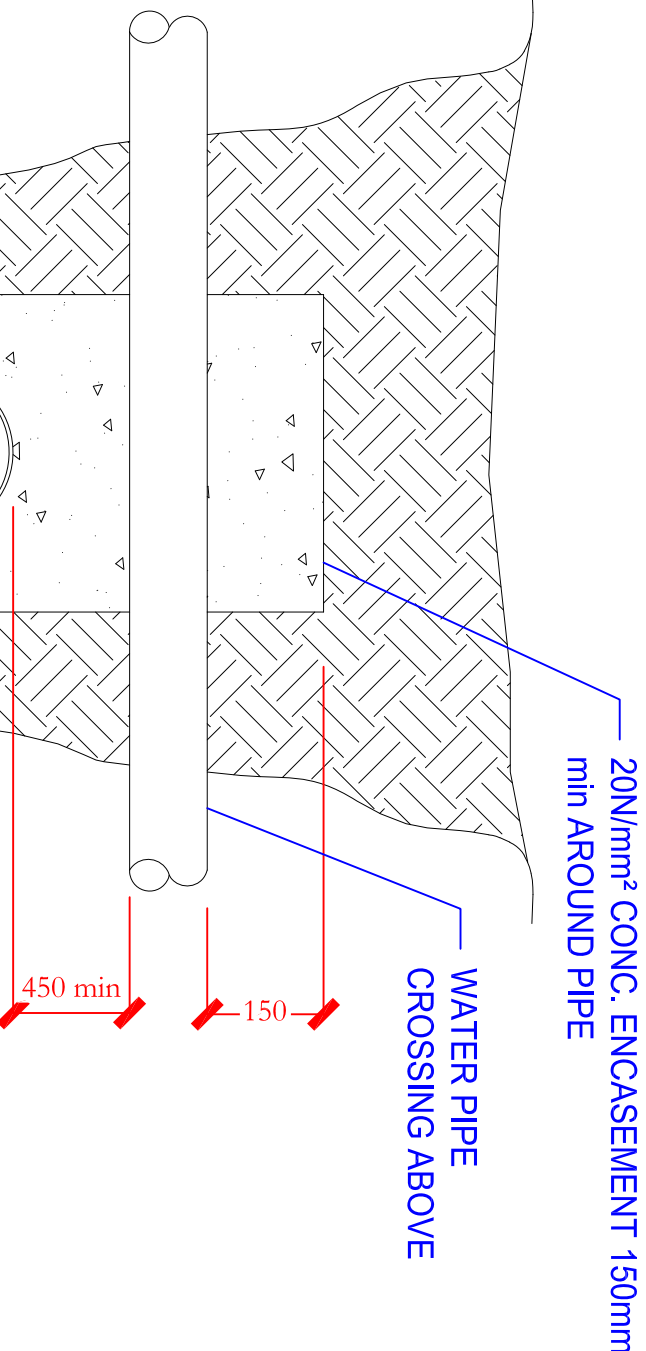
P03 BOX DRAIN CROSSING DETAIL



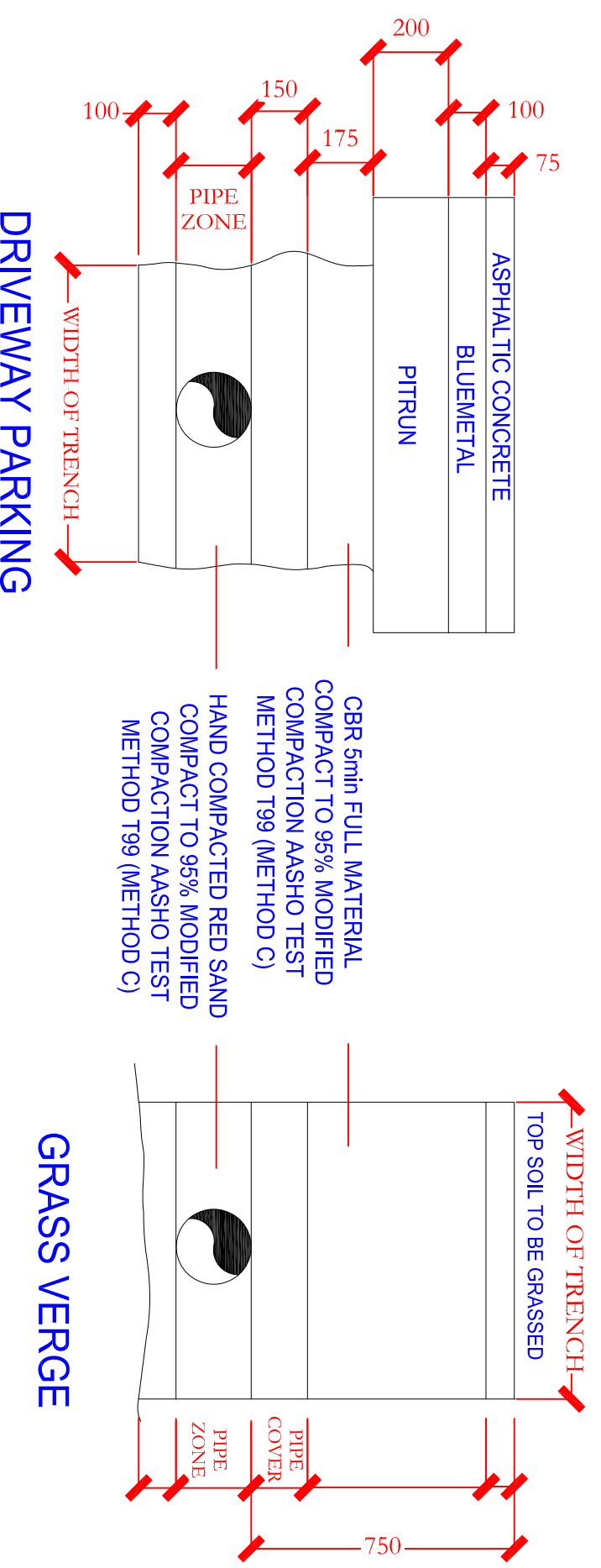
P04 TYPICAL WATER AND SEWER SEPERATION



P05 FIRE HYDRANT DETAIL



P06 PIPE CROSSING DETAIL



P07 TYPICAL PIPE TRENCH DETAILS

DRG. NO.	8	7	6	5	4	3	2	1
REV	000							
	D.C.	T.O.S.	T.O.S.	ORIGINAL ISSUE				
	22-11-17	22-11-17	22-11-17					
	D.C.	T.O.S.	T.O.S.	ALTERATION				
	22-11-17	22-11-17	22-11-17					
REFERENCE DRAWINGS								

COPYRIGHT (c) 2016 SYLVESTER ENGINEERING LIMITED

All rights reserved.

The information in this document is protected by the copyright of Sylvester Engineering Ltd. and may only be used for the purpose for which it is supplied. This document and all its copies must not be shown to third parties and has to be returned on demand.

No part of this Document may be copied, photocopied, reproduced, transmitted, microfilmed, or otherwise duplicated in any medium without written consent of Sylvester Engineering Ltd.

<p>CLIENT</p> <p>GOVT. OF ANTIGUA & BARBUDA</p>	<p>1207-2-ME-PW-51</p>	<p>PROJECT</p> <p>ST. MARY'S SECONDARY SCHOOL CDB UPGRADE PROJECT</p>	SCALE	NONE	DATE	22-11-17
			SIZE	B		
			DESCRIPTION TITLE	POTABLE WATER DETAIL		
			REV	000		